

# CERTIFICATE OF LOCATION OF GOVERNMENT CORNER

SOUTH QUARTER Corner of Section 31, Township 107N, Range 39W

5th Principal Meridian, State of Minnesota, County of MURRAY

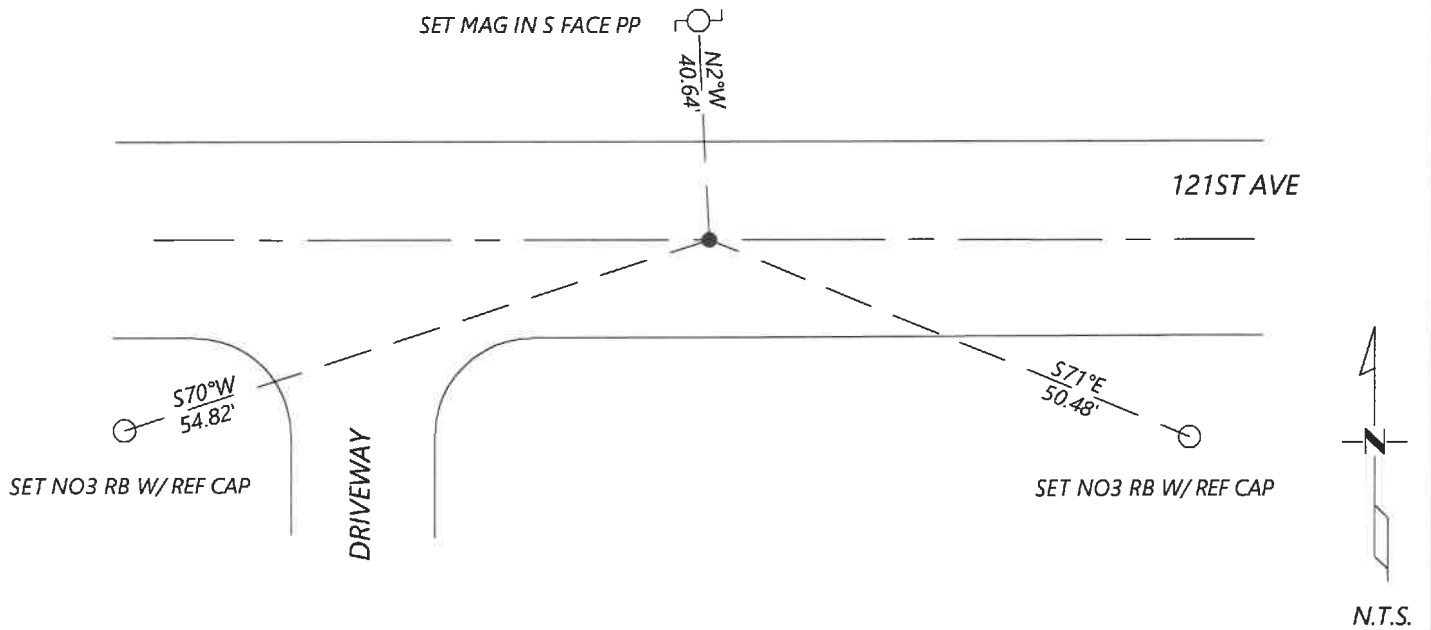
At the corner location shown on the sketch:

On 8/27/2020 found a IRON WITH CAP LS 23008 DOWN 02.FT  
DATE

left monument as found       lowered monument       removed monument (explain)

On \_\_\_\_\_ placed a \_\_\_\_\_  
DATE

### SKETCH OF REFERENCE TIES



Statement of evidence for this corner location is on back of this page.

I hereby certify that this document was researched and prepared by me or under my direct supervision and that I am a licensed Land Surveyor under the laws of the State of Minnesota.

Signature Jim Jorg

Date 6/16/2021 License No. 45874

Title:

- Land Surveyor       Professional Engineer
- County Surveyor       County Engineer

OFFICE OF THE COUNTY RECORDER

County of Murray

I hereby certify that this document was filed in the Co.

Recorder's office at \_\_\_\_\_ M. on the \_\_\_\_\_ day of \_\_\_\_\_ A.D. 20

County Recorder Karen Brown  
by JUN 22 2021, Deputy

DOCUMENT NO. \_\_\_\_\_

JASON LATZKE  
Minnesota License No. 45874

**Statement of Evidence:**

South Quarter Corner of Section 31, Township 107 North, Range 39 West, 5th Principal Meridian, Murray County, Minnesota.

*OCT. 15, 1907 - SURVEY RECORD FOR SECTION 6 SHOWS FOUND STONE, PLACED IRON ROD OVER.*

*5/16/2013 - CORNER CERTIFICATE FILED BY PERRY ZIESKE EXPLAINS THAT HE DUG WITH BACKHOE AT THE CORNER AND FOUND NOTHING. SET 5/8" IRON WITH CAP 23008 USING TIES FROM 1970 DNR SURVEY. HE LISTS THE MURRAY COUNTY COORDINATES (2007 ADJ.) AS N 163463.27 E 550954.07.*

*SEPTEMBER 2020 - WESTWOOD PROFESSIONAL SERVICES SEARCHED AND FOUND IRON W/ CAP LS 23008. POSITION FITS COORDINATES LISTED PER 2013 CORNER CERTIFICATE. ACCEPTED MONUMENT AND ESTABLISHED NEW REFERENCE TIES.*

Analysis of the recovered data, field evidence and survey measurements, indicates that the monument found is the correct perpetuation of this corner. For additional information concerning this corner please contact Westwood Professional Services.